

GFF 1527.35~1566.65nm

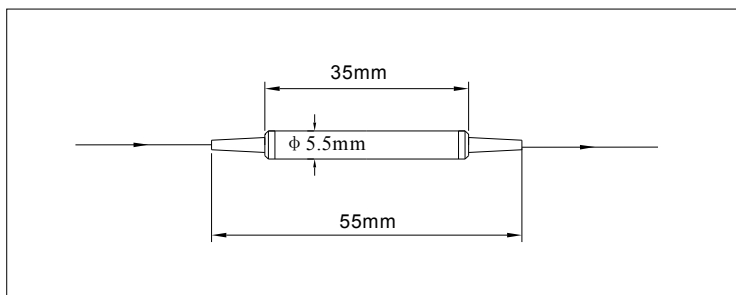
| | | |
|---------------------|-----------------------|----------------------|
| | Lightstar | Customer:XXXX |
| Spec. Number | CAT0978 Rev.01 | N/A |
| Date | 2016-06-24 | N/A |
| Part Number | | NA |

Specifications

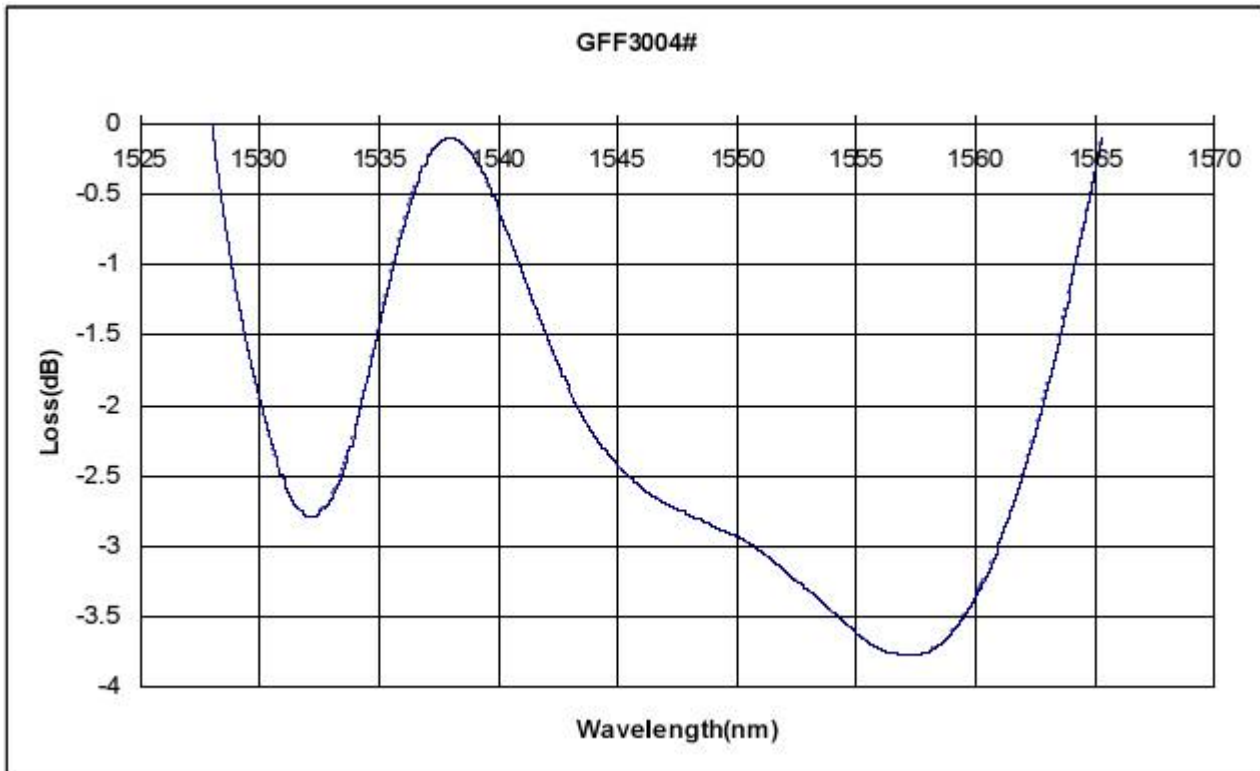
| Type Parameter | CRITERIA |
|---|---|
| Operating wavelength (nm) | 1527.35~1565.65 |
| GFF Target(Including packaging loss)(dB) | Read attached TARGET CURVE |
| Peak Insertion Loss (dB) | ≤ 0.40 |
| Error Function(Peak to Peak) in Operating wavelength range (dB) | ≤ 0.70 |
| PDL (dB) | ≤ 0.15 |
| Return loss(dB) | ≥ 50 |
| PMD(ps) | ≤ 0.10 |
| Fiber Type | SMF-28e For all ports |
| Operating temperature (°C) | -5 ~ +70 |
| Storage temperature (°C) | -40 ~ +85 |
| Dimensions (mm) | $\Phi 5.5 \times L35(P1) \Phi 5.5 \times L38(P2)$ |
| Color Coding | None |
| Fiber Length(m) | ≥ 1.0 |
| Conector Type | None |

*Above specifications are for device without connector.

Package Dimensions



TARGET CURVE:



Ordering Information:

| GF F | Wavelength | GFF1/2 | 0 | Pigtail Type | Length | Connector | Customer |
|------|-------------------------|---|---|--|---------------------------------------|--|--------------------|
| | 1546=1527.35~1566.65 nm | GFF3=GFF3004# XXXX: Customized GFF spectrum | 0 | 1=250um bare fiber 2=900um loose tube | Q=0.25m H=0.5m 1=1.0m 8=0.8m | 0=None 1=FC/UPC 2=FC/APC 3=SC/APC 4=SC/UPC 6=LC/PC 7=LC/APC S=Specify | Customer= -XXXX |